

Are all radio galaxies genuine ellipticals?

M.P. Véron-Cetty¹ and P. Véron¹ *

Observatoire de Haute Provence, CNRS, F-04870 Saint-Michel l'Observatoire, France
e-mail: mira@obs-hp.fr; veron@obs-hp.fr

Received ; accepted

Abstract. Classical double radio sources are believed to be powered by a strong relativistic jet due to the presence of a rapidly spinning black hole in the center of a giant E galaxy formed by the merging of two galaxies. If this is true, no radio source should have been found in spiral or S0 galaxies. A number of radio S0s have been reported, but most of them are probably misclassified Es. However, our own observations confirm that NGC 612 is an S0 although it is associated with the FR II radio source PKS 0131–36. We conclude that S0s can be classical radio sources, but that such occurrences are extremely rare.

Key words. Galaxies: elliptical and lenticular, cD – Galaxies: individual: NGC 612 – Radio continuum: galaxies

1. Introduction

Most classical double radio sources (FR Is and FR IIs; Fanaroff & Riley 1974) are associated with giant elliptical (E) galaxies. It has been suggested that these radio sources are the result of the presence in the nucleus of the galaxies of a rapidly spinning black hole and that these black holes are due to the merging of two galaxies implying that S0s and spirals cannot be the host of a double radio source. About two dozens radio galaxies have been classified as S0s; but early type galaxies are difficult to classify and we show that most of them have been misclassified; however NGC 612 is an FR II radio galaxy and is however a *bona fide* S0.

2. E and S0 galaxies

The difference between E and S0 galaxies resides in the presence or absence of a disk. Es, by definition, have no disk; S0s, by definition, do (Sandage & Bedke 1994).

De Vaucouleurs (1948) showed that the brightness distribution of E galaxies can be represented by the so-called $r^{1/4}$ law:

$$\log(I) = \log(I_e) - 3.331 \times [(r/r_e)^{1/4} - 1]$$

where I is the surface brightness at radius r , r_e the effective radius containing half of the light of the model and I_e the effective surface brightness at that radius. r_e

Send offprint requests to: P. Véron

* Partly based on observations obtained with the ESO 3.6m telescope, La Silla, Chile

varies from ≈ 1.0 to 50 kpc¹ (Hamabe & Kormendy 1987; Ledlow & Owen 1995).

S0 light profiles can be separated into two components: (1) a bulge component characterized by an E-like surface brightness distribution, and (2) a disk component with an exponential light distribution of the form:

$$I = I_o \times e^{-r/r_o}$$

where r_o is the scale length of the exponential disk (Freeman 1970).

3. Dichotomy between bright and weak ellipticals

Bright Es have a markedly different distribution of Hubble types than faint Es, the division occurring near $M_B = -20$; brighter Es have Hubble types that are narrowly clustered around E1-E2, while fainter Es have Hubble types near E3 (Jaffe et al. 1994; Tremblay & Merritt 1996). Isophotes of E galaxies often show systematic deviations from ellipticity; some Es have box-shaped or “boxy” isophotes, while others have disk-shaped or “disky” isophotes (Carter 1978; Lauer 1985). Disky isophotes can be attributed to the presence of a weak, more or less edge-on, disk superposed on a spheroidal main body (Bender et al. 1987). Jaffe et al. (1994) found that all Es fainter than $M_B = -20$ are diskly.

Disky and faint Es ($M_B > -20.8$) are in general consistent with being rotationally flattened; in contrast, boxy and bright Es are slow rotators (Davies et al. 1983; Carter 1987; Bender 1988; Capaccioli & Longo 1994).

¹ $H_o = 50 \text{ km s}^{-1} \text{ Mpc}^{-1}$ is assumed throughout this paper

At small radii, E galaxies have two types of brightness profiles. The first type consists of galaxies that have a cuspy core; these galaxies have brightness profiles that break from steep outer power laws to shallow inner cusps. The second type consists of galaxies that have profiles that continue into the resolution limit as steep power laws, showing no evidence of cores (Lauer et al. 1995; Gebhardt et al. 1996). Luminous ($M_B < -21.0$) and boxy Es have a cuspy core; faint ($M_B > -19.5$) and disky Es show power-law profiles; it is possible that all power-law Es are in fact S0s masquerading as ellipticals (Nieto et al. 1991; Faber et al. 1997; Michard 1998b).

“Bright” galaxies are characterized by very large effective radii ($\langle r_e \rangle = 10.5$ kpc), while “ordinary” galaxies do not grow larger in size than $r_e = 3$ kpc (D’Onofrio et al. 1994).

Based on these facts, Capaccioli et al. (1992), Kormendy & Bender (1996) and Kormendy (1999) proposed that spirals, S0s and low luminosity, disky Es form a continuous sequence while giant, boxy Es are unrelated to other ellipticals.

A number of observational facts indicate that giant Es are the result of merging (Merritt 1993; Capaccioli & Longo 1994). In particular, massive boxy Es present signatures of merging processes (Nieto & Bender 1989). For Naab et al. (1999), merging of two equal-mass spirals leads to an anisotropic, slowly rotating system with preferentially boxy isophotes, while unequal-mass mergers result in the formation of rotationally supported Es with disky isophotes.

4. Host galaxies of double radio sources

4.1. Radio source host galaxies as giant Es

A number of pieces of observational evidence suggest that most radio source host galaxies are giant Es (Lilly & Prestage 1987; Owen & Laing 1989; Owen & White 1991; Govoni et al. 2000a; Hamilton et al. 2000) with scale-lengths in the range 6-23 kpc (McLure et al. 1999).

Low luminosity classical radio galaxies (FR Is) are luminous Es showing evidence for a well resolved, shallow central cusp when they are not severely affected by dust extinction, suggesting that they belong to the class of “bright” Es (Verdoes Kleijn et al. 2000; Capetti et al. 2000).

A large fraction of both FR Is (Colina & de Juan 1995) and FR IIs (Smith & Heckman 1989b; Hutchings 1987) radio galaxies exhibit peculiar optical morphologies (tails, fans, bridges, shells, isophote twists, nonconcentric isophotes, filaments) which are probably products of galaxy interaction; a significant number are optically interacting.

Large amounts (10^9 to $10^{11} M_\odot$) of ^{12}CO have been detected in a number of radio galaxies; mergers of two gas-

rich disk galaxies provide an attractive explanation for the presence of this gas (Lim et al. 2000).

4.2. Do radio loud S0 galaxies exist?

The radio detection rate for S0s is very low compared with that for Es, with the possibility that the radio loud S0s are misclassified Es (Ekers & Ekers 1973; Dressel 1981; Hummel & Kotanyi 1982). Early-type galaxies are indeed difficult to classify; a relatively large fraction (up to 30%) of early type galaxies have a different classification in different catalogues (Jenkins 1982; Bregman et al. 1992).

Morphological classification of dust lane galaxies have, for long, been subject to uncertainty; according to Sandage (1961) there is no optical evidence for dust in Es; consequently, early type galaxies with dust have, in the past, been given S0 classifications (Kotanyi & Ekers 1979; Hawarden et al. 1981; Ebner et al. 1988). In fact, even the classical Es often contain dust (Goudfrooij et al. 1994), although dust features appear to be much more frequent in disky than in boxy Es (Michard 1998a).

cDs are extreme giant Es which have a separate extended, low surface brightness envelope (Tonry 1987; Schombert 1988). As a consequence, a number of cD radio galaxies have been erroneously classified as S0s (Matthews et al. 1964).

Twenty three classical double radio galaxies (either FR Is or FR IIs) classified as disk systems have been mentioned in the literature; they are listed in Table 1 together with NGC 612.

The analysis of the morphology of these galaxies shows that most of them were misclassified as S0s, because either they are cDs, or they contain dust, or their morphology is disturbed by interaction with another closeby galaxy. In a few cases, the classification is doubtful due to a lack of high quality observations.

Four radio galaxies classified as S0s are probably cDs instead: 3C 29.0 (Fasano et al. 1996), NGC 383 (Michard 2001, private communication), NGC 547 (Fasano et al. 1996) and NGC 1316 (Schweizer 1980).

Three Es have been misclassified as S0s, probably because of the presence of dust: UGC 367 (González-Serrano & Pérez-Fournon 1991), 3C 223.1 (de Koff et al. 2000) and 3C 268.2 (Hutchings et al. 1988; de Koff et al. 2000).

Several Es have disturbed isophotes due to interaction with a close companion or a recent merging: 3C 136.1 (Martel et al. 1999; de Koff et al. 2000), NGC 5128 (Malin et al. 1983), NGC 5141 (González-Serrano et al. 1993), MCG 05.33.12 (Heckman et al. 1986; Evans et al. 1999), IC 1065 (Heckman et al. 1982; de Koff et al. 2000), NGC 6047 (Heckman et al. 1986) and NGC 7237 (Borne & Hoessel 1988; Comins & Owen 1991).

In a few cases, the early S0 classification was based on poor scale photographs; more recent, better quality observations show that the object is really an elliptical: PKS 0449–17 (Fasano et al. 1996), 3C 223.0 (Hutchings

Table 1. List of classical double radio sources mentioned in the literature as being S0s.

Position	Optical name	Radio name	z
0034+25	UGC 367	B2 0034+25	0.032
0055-01	UGC 595	3C 29.0	0.045
0104+32	NGC 383	3C 31.0	0.017
0123-01	NGC 547	3C 40.0	0.018
0130-36	NGC 612	PKS 0131-36	0.030
0257-39		PKS 0257-398	0.061
0320-37	NGC 1316	PKS 0320-37	0.006
0331-01		3C 89.0	0.139?
0449-17	ESO 552-G14	PKS 0449-17	0.032
0512+24		3C 136.1	0.064
0936+36		3C 223.0	0.137
0938+39		3C 223.1	0.107
1053-28		PKS 1053-282	0.061
1122+39	NGC 3665	B2 1122+39	0.007
1158+31		3C 268.2	0.361
1251+27	NGC 4789	5C 4.20	0.028
1322-42	NGC 5128	PKS 1322-42	0.002
1322+36	NGC 5141	B2 1322+36	0.018
1344-24	ESO 509-G108	PKS 1344-241	0.020
1350+31	MCG 05.33.12	3C 293.0	0.045
1414+11	NGC 5532	3C 296.0	0.024
1448+63	IC 1065	3C 305.0	0.041
1602+17	NGC 6047	PKS 1602+178	0.032
2212+13	NGC 7237	3C 442.0	0.026

et al. 1988; de Koff et al. 1996), NGC 4789 (Bender et al. 1989; de Juan et al. 1994) and NGC 5532 (Bender et al. 1989; de Juan et al. 1994).

In two cases (PKS 1053-282 and PKS 1344-241) the radio morphology is poorly known and it is possible that the radio source is not a classical double radio source (Ekers et al. 1989).

The available data are sometimes insufficient to conclude: PKS 0257-398 (Govoni et al. 2000b) and 3C 89.0 (Smith & Heckman 1989a; Zirbel 1996).

The true nature of NGC 3665 is rather controversial (Davies & Birkinshaw 1988; Peletier et al. 1990; Burkert 1993; Michard & Marchal 1994).

4.3. The case of NGC 612

PKS 0131-36 has been identified with the 14.2 mag galaxy NGC 612 (Westerlund & Smith 1966). A weak radio core detected by Morganti et al. (1993) coincides, within the measurement errors ($\pm 0''.5$), with the optical nucleus of the galaxy (Jones & McAdam 1992), making the reality of the identification unquestionable.

A radio map published by Morganti et al. (1993) shows it to be a typical FR II radio source. With a 1400 MHz flux density of 7.1 Jy, and a redshift $z=0.030$, the absolute luminosity is $P_{1400}=2.6 \times 10^{25} \text{ W Hz}^{-1}$; assuming $i=11.42$ (see below), and $R-i=0.20$ for an E galaxy (Véron-Cetty & Woltjer 1990), the absolute R magnitude of the galaxy within an isophote of $24.5 \text{ mag arcsec}^{-2}$ is -23.9 . If $H_0=75$

$\text{km s}^{-1} \text{ Mpc}^{-1}$, these numbers become $P_{1400}=1.2 \times 10^{25} \text{ W Hz}^{-1}$ and $M_R=-23.0$; thus, according to Ledlow & Owen (1996), this object would be classified as an FR I, but near the borderline between FR Is and FR IIs.

NGC 612 has a fairly well-developed luminous disk seen almost edge-on (Kotanyi & Ekers 1979) with a strong dust ring (Westerlund & Smith 1966; Fasano et al. 1996). It was classified as an S0 by Kotanyi & Ekers and Sansom et al. (1987) and as an S0-a by Lauberts (1982); Westerlund & Smith (1966) described it as an S0-a peculiar galaxy. Goss et al. (1980) showed that the galaxy is rotating, the dust ring being orthogonal to the rotation axis of the galaxy. However, according to Fasano et al. (1996), the luminosity profile follows the de Vaucouleurs law almost perfectly with an effective radius $r_e = 16.72 \text{ kpc}$ (assuming $H_0 = 50 \text{ km s}^{-1} \text{ Mpc}^{-1}$).

We have obtained, on August 15, 1993, three 90 sec images of NGC 612 through a Gunn i filter (7200-8500 Å) (seeing $1''.5$) and, on the next day, one 10 min image through a B filter (seeing $1''.6$), at the ESO 3.6m telescope at La Silla, with EFOSC and a $512 \times 512 \text{ } 27 \mu\text{m}$ pixel ($0''.607$) Tektronix CCD. Fig. 1 shows the sum of the three i images.

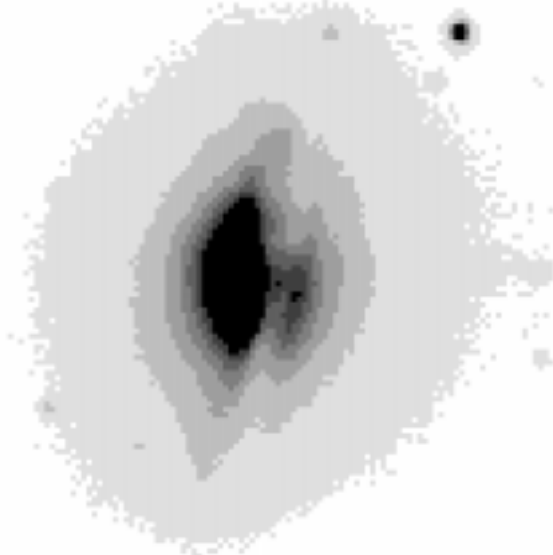


Fig. 1. i image of NGC 612. The total exposure time is 270 sec. North is to the top, East to the left; the size of the image is $67 \times 73 \text{ arcsec}$.

Fig. 2 is the ratio between the B and i images and shows the dust feature which appears as two parallel lanes.

The programme PLEINPOT written by P. Prugniel, which fits ellipses over the whole galaxy, was used to analyse the i image; the centre of the galaxy was found $1''.2 \text{ W}$ and $0''.2 \text{ N}$ of the maximum intensity (because of the strong dust feature obscuring the nucleus); the galaxy has an axis ratio $b/a = 0.75$ at $\text{PA } 168^\circ$, in agreement with Ekers et al. (1978).



Fig. 2. Ratio of the B to the i images showing the distribution of the dust. The orientation and size are the same as in Fig. 1.

The mean surface brightness was measured in ellipses having an axis ratio equal to 0.75 at PA 168° . An $r^{1/4}$ fit to the surface brightness profile of the i image is not satisfactory; adding a disk, we obtain (Fig. 3):

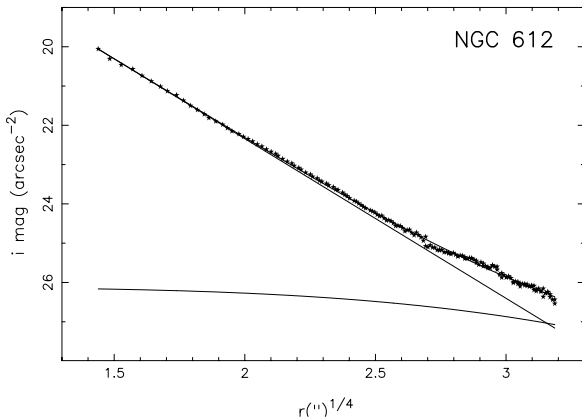


Fig. 3. i brightness profile of NGC 612 and fit obtained with a two component model.

a) for the $r^{1/4}$ component: $r_e = 17''.7$ (15.5 kpc) (in good agreement with the value found by Fasano et al. (1996), integrated i magnitude = 11.83 (assuming i = 12.31 for the standard star LTT 3218; Véron-Cetty & Woltjer 1997).

b) for the disk: $r_o = 118''.2$, integrated i magnitude = 12.68.

The integrated i magnitude for the model is 11.42.

This does not contradict the above mentioned result of Fasano et al. (1996), as these authors do not go beyond $r^{1/4}=2.8$.

The fit of the B image is meaningless because of the strong absorption lane.

Figure 4 is the result of the subtraction from the i image of a E model galaxy having the parameters deduced from the fit. This image shows the disk of the galaxy strongly perturbed by the dust.

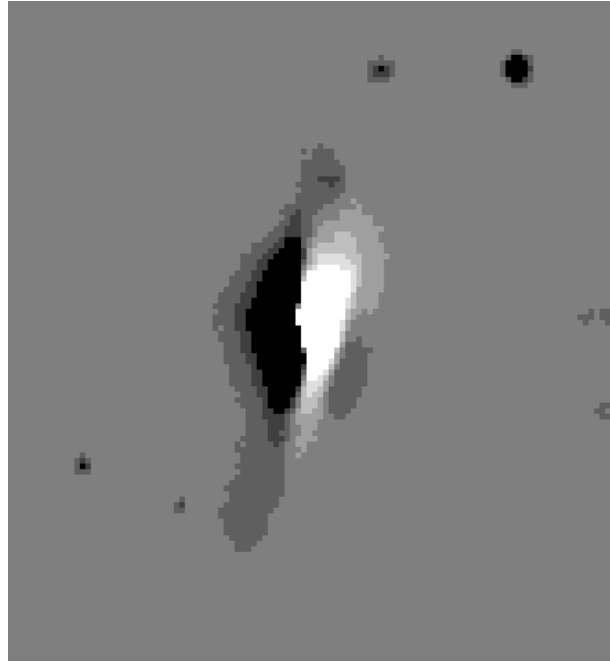


Fig. 4. Result of the subtraction from the i image of a model E galaxy which is centered $1''.2$ W of the i peak intensity, has an $r^{1/4}$ profile with $r_e = 17''.7$, and $b/a = 0.75$ at PA 168° and is convolved with a PSF). The orientation and size are the same as in fig. 1.

Ekers et al. (1978) remarked that NGC 612 was the only known radio galaxy with an obvious stellar disk, but their conclusion was based on the examination of photographic plates; we confirm, with CCD images obtained with a larger telescope, that this galaxy is indeed an S0.

4.4. Classical double radio sources as spiral galaxies?

Three radio sources have, in the past, been reported to be associated with a spiral galaxy: NGC 5972, PKS 0400–181, and IRAS 04210+0400. Although NGC 5972 was classified as an S0-a by Nilson (1973), Véron & Véron-Cetty (1995) showed that it is an E with tidal arms. PKS 0400–181 was first identified with a spiral galaxy (Savage & Wall 1976), but Shaver et al. (1983) showed that the true identification is an E at $z = 0.341$ located behind the spiral. Beichman et al. (1985) reported the discovery of a type 2 Seyfert nucleus

(IRAS 04210+0400) in what appears to be a spiral galaxy associated with a double lobed radio source; Hill et al. (1988) showed that the radio source is an FR I but that there is no evidence that the galaxy is a spiral.

González-Serrano & Carballo (2000) have analysed CCD images of 70 galaxies associated with a low luminosity B2 radio source; they classified 57 galaxies as Es, seven as irregulars and six as spirals; five of these last six radio sources are unrelated to the spiral galaxies with which they had initially been identified on the basis of rather poor radio positions. The identification of the sixth object, B2 0722+30, with Zw 147.020 was confirmed by accurate radio positions; the galaxy is a spiral, but both the size (9 kpc) and the luminosity of the radio source are typical of radio sources associated with spiral Seyfert galaxies (Capetti et al. 2000).

However, Ledlow et al. (2001) have reported the discovery of an FR I radio source associated with a spiral galaxy in the cluster Abell 428. Moreover, the BL Lac object PKS 1413+135 is hosted by a spiral (Lamer et al. 1999); BL Lac objects are supposed to be FR I radio sources with the radio jet oriented towards the observer. So it seems now well established that, although extremely rare, double radio sources associated with a spiral galaxy do exist.

5. Discussion

There is a very limited range of inputs that determine the nature of an AGN: the fuel supply, the mass of the black hole (BH), and its angular momentum. The fuel supply rate is similar for AGNs in radio-loud and radio-quiet objects since both cover the whole range of luminosities; regarding the mass of the BH, the Eddington limit indicates that masses up to $10^8 M_{\odot}$ occur in some radio-quiet AGNs; somewhat more massive BHs could occur in radio galaxies, but masses in excess of $10^{10} M_{\odot}$ seem to be ruled out on dynamical grounds, at any rate in the nearest Es; the difference between radio loud and radio quiet galaxies should then be the larger angular momentum of the central BH in radio loud objects (Blandford 1990; Scheuer 1992; Meier 1999). However, according to Laor (2000), when the mass of the central BH is larger than $10^9 M_{\odot}$, the object is radio loud while, when it is smaller than $3 \times 10^8 M_{\odot}$, the object is radio quiet. Blandford & Znajek (1977) showed that rotational energy can be extracted from a spinning BH surrounded by a magnetized accretion disk. The BZ mechanism seems to be adequate to produce the radio jet in FR II radio sources in which the BH is accreting at or near the Eddington rate (Moderski & Sikora 1996). In the case of FR I radio sources which are probably accreting at sub-Eddington rates, the question is controversial (Rees et al. 1982; Ghosh & Abramowicz 1997; Livio et al. 1999).

Blandford (1990) argued that sub-Eddington mass accretion rates produce slowly spinning BHs and that rapidly spinning BHs require high accretion rates. However, accretion from a disk is an ineffective way to

spin up BHs since little of the disk's angular momentum falls into the hole; on the other hand, two BHs of comparable mass can spiral together to produce a rapidly-spinning hole (Wilson & Colbert 1995). Moreover, in FR Is objects, the accretion rates are certainly small and yet these objects have a radio jet implying a rapidly rotating BH, while narrow line Seyfert 1s are generally radio quiet spiral galaxies which are believed to contain a small mass BH accreting matter at a high rate. Therefore, the larger angular momentum of the central BH in radio loud E galaxies is more probably the result of the merging of two BHs (Scheuer 1992).

It seems therefore that classical double radio sources which are characterized by the presence of a radio jet should be associated with bright, boxy Es resulting from the merging of two spiral galaxies, each containing a nuclear BH of similar mass. It seems however that this is not always the case as, as we have seen, radio loud spiral and S0 galaxies do exist.

6. Conclusion

Most classical double radio sources are hosted by giant E galaxies. This led to a scenario in which these sources, which are powered by a strong relativistic jet, are due to the presence of a rapidly spinning BH in the center of an E galaxy resulting from the merging of two galaxies. However, although extremely rare, S0 and spiral hosts exist which cannot be explained by this mechanism.

Acknowledgements. We would like to thank R. Michard for useful advices and P. Prugniel for allowing us to use his program PLEINPOT.

References

- Beichman C., Wynn-Williams C.G., Lonsdale C.J. et al. 1985,ApJ 293,148
- Bender R. 1988,A&A 193,L7
- Bender R., Döbereiner S., Möllenhoff C. 1987,A&AS 74,385
- Bender R., Surma P., Döbereiner S., Möllenhoff C., Madejsky R. 1989, A&A 217,35
- Blandford R.D. 1990,in: Active galactic nuclei, Saas-Fee advanced course 20, T.J.-L. Courvoisier & M. Mayor eds., p. 161
- Blandford R.D., Znajek R.L. 1977,MNRAS 179,433
- Borne K.D., Hoessel J.G. 1988,ApJ 330,51
- Bregman J.N., Hogg D.E., Roberts M.S. 1992,ApJ 387,484
- Burkert A. 1993,A&A 278,23
- Capaccioli M., Longo G. 1994,A&AR 5,293
- Capaccioli M., Caon N., D'Onofrio M. 1992,MNRAS 259,323
- Capetti A., de Ruiter H.R., Fanti R. et al. 2000,A&A 362,871
- Carter D. 1978,MNRAS 182,797
- Carter D. 1987,ApJ 312,514
- Colina L., de Juan L. 1995,ApJ 448,548
- Comins N.F., Owen F.N. 1991,ApJ 382,108
- Davies R.L., Birkinshaw M. 1988,ApJS 68,409
- Davies R.L., Efstathiou G., Fall S.M., Illingworth G., Schechter P.L. 1983, ApJ 266,41

- de Koff S., Baum S.A., Sparks W.B. et al. 1996,ApJS 107,621
- de Koff S., Best P., Baum S.A. et al. 2000,ApJS 129,33
- de Juan L., Colina L., Pérez-Fournon I. 1994,ApJS 91,507
- de Vaucouleurs G. 1948,Annales Astrophys. 11,247
- D'Onofrio M., Capaccioli M., Caon N. 1994,MNRAS 271,523
- Dressel L.L. 1981,ApJ 245,25
- Ebneter K., Djorgovski S., Davies M. 1988,AJ 95,422
- Ekers R.D., Ekers J.A. 1973,A&A 24,247
- Ekers R.D., Goss W.M., Kotanyi C.G., Skellern D.J. 1978,A&A 69,L21
- Ekers R.D., Wall J.V., Shaver P.A. et al. 1989,MNRAS 236,737
- Evans A.S., Sanders D.B., Surace J.A., Mazzarella J.M. 1999,ApJ 511,730
- Faber S.M., Tremaine S., Ajhar E.A. et al. 1997,AJ 114,1771
- Fanaroff B.L., Riley J.M. 1974,MNRAS 167,31P
- Fasano G., Falomo R., Scarpa R. 1996,MNRAS 282,40
- Freeman K.C. 1970,ApJ 160,811
- Gebhardt K., Richstone D., Ajhar E.A. et al. 1996,AJ 112,105
- Ghosh P., Abramowicz M.A. 1997,MNRAS 292,887
- González-Serrano J.I., Pérez-Fournon I. 1991,A&A 249,75
- González-Serrano J.I., Carballo R. 2000,A&AS 142,353
- González-Serrano J.I., Carballo R., Pérez-Fournon I. 1993,AJ 105,1710
- Goss W.J.M., Danziger I.J., Forbury R.A.E., Boksenberg A. 1980,MNRAS 190,23P
- Goudfrooij P., Hansen L., Jørgensen H.E., Nørgaard-Nielsen H.U. 1994, A&AS 105,341
- Govoni F., Falomo R., Fasano G., Scarpa R. 2000a,A&A 353,507
- Govoni F., Falomo R., Fasano G., Scarpa R. 2000b,A&AS 143,369
- Hamabe M., Kormendy J. 1987,IAU Symp. 127,379
- Hamilton T.S., Casertano S., Turnshek D.A. 2000, (astro-ph/0011255)
- Hawarden T.G., Elson R.A.W., Longmore A.J., Tritton S.B., Corwin Jr. H.G. 1981,MNRAS 196,747
- Heckman T.M., Miley G.K., Balick B., van Breugel W.J.M., Butcher H.R. 1982, ApJ 262,529
- Heckman T.M., Smith E.P., Baum S.A. et al. 1986,ApJ 311,526
- Hill G.J., Wynn-Williams C.G., Becklin E.E., MacKenty J.W. 1988,ApJ 335,93
- Hummel E., Kotanyi C.G. 1982,A&A 106,183
- Hutchings J.B. 1987,ApJ 320,122
- Hutchings J.B., Johnson I., Pyke R. 1988,ApJS 66,361
- Jaffe W., Ford H.C., O'Connell R.W., van den Bosch F.C., Ferrarese L. 1994, AJ 108,1567
- Jenkins C.R. 1982,MNRAS 200,705
- Jones P.A., McAdam W.B. 1992,ApJS 80,137
- Kormendy J. 1999,ASP Conf Ser 182,124
- Kormendy J., Bender R. 1996,ApJ 464,L119
- Kotanyi C.G., Ekers R.D. 1979,A&A 73,L1
- Lamer G., Newsam A.M., McHardy I.M. 1999,MNRAS 309,1085
- Laor A. 2000,ApJ 543,L111
- Lauberts A. 1982,*The ESO/Uppsala Survey of the ESO(B) Atlas*, European Southern Observatory, Garching bei München
- Lauer T.R. 1985,MNRAS 216,429
- Lauer T.R., Ajhar E.A., Byun Y.-I. et al. 1995,AJ 110,2622
- Ledlow M.J., Owen F.N. 1995,AJ 110,1959
- Ledlow M.J., Owen F.N. 1996,AJ 112,9
- Ledlow M.J., Owen F.N., Yun M.S., Hill J.M. 2001,ApJ 552,120
- Lilly S.J., Prestage R.M. 1987,MNRAS 225,331
- Lim J., Leon S., Combes F., Dinh-V-Trung 2000,ApJ 545,L93
- Livio M., Ogilvie G.I., Pringle J.E. 1999,ApJ 512,100
- Malin D.F., Quinn P.J., Graham J.A. 1983,ApJ 272,L5
- Martel A.R., Baum S.A., Sparks W.B. et al. 1999,ApJS 122,81
- Matthews T.A., Morgan W.W., Schmidt M. 1964,ApJ 140,35
- McLure R.J., Kukulka M.J., Dunlop J.S. et al. 1999,MNRAS 308,377
- Meier D.L. 1999, in: Life cycles of radio galaxies, eds. Biretta et al., New Astronomy Reviews (in press) (astro-ph/9908283)
- Merritt D. 1993,Science 259,1867
- Michard R. 1998a,A&A 334,453
- Michard R. 1998b,A&A 335,49
- Michard R., Marchal J. 1994,A&AS 105,481
- Moderski R., Sikora M. 1996,MNRAS 283,854
- Morganti R., Killeen N.E.B., Tadhunter C.N. 1993,MNRAS 263,1023
- Naab T., Burkert A., Hernquist L. 1999,ApJ 523,L133
- Nieto J.-L., Bender R. 1989,A&A 215,266
- Nieto J.-L., Bender R., Surma P. 1991,A&A 244,L37
- Nilson P. 1973,*Uppsala General Catalog of Galaxies*, Uppsala Astronomical Observatory, Uppsala
- Owen F.N., Laing R.A. 1989,MNRAS 238,357
- Owen F.N., White R.A. 1991,MNRAS 249,164
- Peletier R.F., Davies R.L., Illingworth G.D. et al. 1990,AJ 100,1091
- Rees M.J., Begelman M.C., Blandford R.D., Phinney E.S. 1982,Nat. 295,17
- Sandage A. 1961,*The Hubble atlas of galaxies*, Carnegie institution of Washington, Washington, D.C.
- Sandage A., Bedke J. 1994,*The Carnegie atlas of galaxies*, Carnegie Institution of Washington, Washington D.C.
- Sansou A.E., Danziger I.J., Ekers R.D. et al. 1987,MNRAS 229,15
- Savage A., Wall J.V. 1976,AJPS 39,39
- Scheuer P.A.G. 1992,in: Extragalactic radio sources. From beams to jets. J. Roland, H. Sol & G. Pelletier (eds.). Cambridge university press, p 368
- Schombert J.M. 1988,ApJ 328,475
- Schweizer F. 1980,ApJ 237,303
- Shaver P.A., Wall J.V., Danziger I.J. et al. 1983,MNRAS 205,819
- Smith E.P., Heckman T.M. 1989a,ApJS 69,365
- Smith E.P., Heckman T.M. 1989b,ApJ 341,658
- Tonry J.L. 1987,IAU Symp. 127,89
- Tremblay B., Merritt D. 1996,AJ 111,2243
- Verdoes Kleijn G.A., Baum S.A., de Zeeuw P.T., O'Dea C.P. 2000,AJ 118,2592
- Véron P., Véron-Cetty M.P. 1995,A&A 296,315
- Véron-Cetty M.P., Woltjer L. 1990,A&A 236,69
- Véron-Cetty M.P., Woltjer L. 1997, in: Quasar hosts, ESO Astrophysics Symposia, p. 27
- Westerlund B.E., Smith L.F. 1966,AJP 19,181
- Wilson A.S., Colbert E.J.M. 1995, ApJ 438,62
- Zirbel E.L. 1996,ApJ 473,713